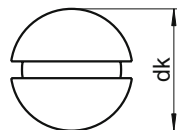
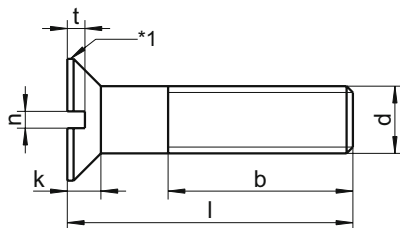


DIN 963 - sim. ISO 2009

Slotted countersunk flat head screws



dk	3,0	3,8	4,7	5,6	6,5	7,5	9,2	11,0	14,5	18,0	22,0
k max.	0,96	1,20	1,50	1,65	1,93	2,20	2,50	3,00	4,00	5,00	6,00
n	0,4	0,5	0,6	0,8	0,8	1,0	1,2	1,6	2,0	2,5	3,0
t min.	0,32	0,40	0,50	0,60	0,70	0,80	1,00	1,20	1,60	2,00	2,40
b min.	15	16	18	19	20	22	25	28	34	40	46
Ø	0,4X2,0	0,5X3,0	0,6X3,5	0,8X4,0	0,8X4,0	1,0X5,5	1,2X7,0	1,6X9,0	2,0X12,0	2,5X14,0	3,0X16

Length / Ø	M1,6	M2	M2,5	M3	M3,5	M4	M5	M6	M8	M10	M12
3	▲●										
4	▲●	▲●		▲●							
5	▲●	▲●	▲●	▲●	▲●	▲●					
6	▲●	▲●	▲●	▲●	▲●	▲●	▲●				
8	▲●	▲●	▲●	▲●	▲●	▲●	▲●	▲●			
10	▲●	▲●	▲●	▲●	▲●	▲●	▲●	▲●	▲●		
12	▲●	▲●	▲●	▲●	▲●	▲●	▲●	▲●	▲●		
14	▲●	▲●	▲●	▲●	▲●	▲●	▲●	▲●	▲●		
16	▲●	▲●	▲●	▲●	▲●	▲●	▲●	▲●	▲●	▲●	
18		▲●	▲●	▲●	▲●	▲●	▲●	▲●	▲●	▲●	
20		▲●	▲●	▲●	▲●	▲●	▲●	▲●	▲●	▲●	▲●
22		▲●	▲●	▲●	▲●	▲●	▲●	▲●	▲●	▲●	▲●
25		▲●	▲●	▲●	▲●	▲●	▲●	▲●	▲●	▲●	▲●
30		▲●	▲●	▲●	▲●	▲●	▲●	▲●	▲●	▲●	▲●
35				▲●	▲●	▲●	▲●	▲●	▲●	▲●	▲●
40				▲●		▲●	▲●	▲●	▲●	▲●	▲●
45				▲●		▲●	▲●	▲●	▲●	▲●	▲●
50				▲●		▲●	▲●	▲●	▲●	▲●	▲●
55				▲●		▲●	▲●	▲●	▲●	▲●	▲●
60				▲●		▲●	▲●	▲●	▲●	▲●	▲●
65						▲●	▲●	▲●	▲●	▲●	▲●
70						▲●	▲●	▲●	▲●	▲●	▲●
75						▲●	▲●	▲●	▲●	▲●	▲●
80						▲●	▲●	▲●	▲●	▲●	▲●
90							▲●	▲●	▲●	▲●	▲●
100							▲●	▲●	▲●	▲●	▲●
110								▲●	▲●	▲●	▲●
120								▲●	▲●	▲●	▲●
SU	1000	1000	1000	1000 ≥ 18 500	1000 ≥ 14 500	1000 ≥ 14 500 ≥ 70 200	500 ≥ 22 200	200 ≥ 35 100	100	100 ≥ 70 50	50

■ A1 / ▲ A2 / ● A4 | SU: Sales unit | All measurements in mm | Other dimensions on request.

Example item no. 963-2-8X40 DIN 963 - A2 - M8 - l = 40mm - *1 head with rounded or flat-topped edge

Slotted countersunk flat head screws DIN 963 are also available as micro-screws on request. Countersunk flat head screws with cross recess Phillips and Pozidrive can be found as DIN 965, with hexagon socket head as DIN 7991, with TX as WS 9470 and as security screws with TX and PIN as WS 9482 in this catalogue.